



CHANGES IN PROCEDURES FOR HEALTH SCREENING, COVID-19 INFECTION DETECTION TEST & QUARANTINE FOR TRAVELERS ARRIVING AT MALAYSIA'S INTERNATIONAL GATEWAY

YBhg. Tan Sri Dato 'Seri Dr. Noor Hisham bin Abdullah, Director General of Health Malaysia through his letter dated 12 August 2021 has explained in detail about the Changes in Procedures for Health Screening, COVID-19 Infection Detection Test & Quarantine for Travellers Arriving at the International Gateway of Malaysia.

The Ministry of Health Malaysia (MOH) took note of the speech of the YAB Prime Minister of Malaysia dated 8 August 2021 on the privileges for individuals who have received complete their COVID-19 vaccination.

In this regard, the MOH has reviewed the health screening procedures, COVID-19 infection detection test screening and quarantine for travellers from abroad arriving at the International Gateway (PMA) Malaysia.

The procedure effective immediately from the date the letter is issued is as in Appendix 1, A & B.



PROCEDURES FOR HEALTH SCREENING, COVID-19 INFECTION DETECTION TESTING AND QUARANTINE FOR CITIZENS AND NON- CITIZENS TRAVELERS WHO HAVE JUST ARRIVED IN MALAYSIA FROM ABROAD

The Ministry of Health Malaysia (MOH) took note of the Speech of the YAB Prime Minister of Malaysia dated 8 August 2021 on the facilities for individuals who have received complete immunization COVID-19. In this regard, the MOH has reviewed the health screening procedures, COVID-19 infection detection test screening and quarantine for travellers from abroad arriving at the International Gateway (PMA) Malaysia.

Overseas Traveller Management Procedures

- i. Travellers must undergo COVID-19 infection detection test screening using COVID-19 RT-PCR test no later than three (3) days before departure and only travellers with a negative COVID-19 test result can continue flying to Malaysia;
- ii. Travellers need to make a formal application for quarantine at home or residence by sending an email to the Ministry of Health Malaysia at the address: hso@moh.gov.my;
- iii. A risk assessment for travelers based on the application for quarantine at home or residence will be conducted. The house or place of residence can be considered as a compulsory quarantine place if it meets the following conditions:
 - a. Citizen and non -citizen travellers who have a house or place of residence in Malaysia (including PR, Malaysia My Second Home resident - MM2H and employees),
 - b. Negative RT- PCR screening test for infection detection COVID-19,
 - c. Travellers who have received complete COVID-19 vaccination (refer to Appendix A)
 - d. The house or place of residence is suitable (refer to Appendix A);



- iv. Travellers are required to download and fill out a health declaration in the MySejahtera app;
- v. Travellers are required to scan the QR Code “Travellers from Abroad” by using the MySejahtera application upon arrival at PMA;
- vi. Travellers are required to undergo the COVID-19 infection detection test screening i.e. the COVID-19 RT-PCR test upon arrival at PMA. The COVID-19 infection detection test screening fee is borne by the Person Under Surveillance (PUS);
- vii. Health assessments are conducted on all travellers arriving at PMA;
- viii. Asymptomatic travellers will be required to take a RT-PCR infection detection swab test for the COVID-19;
- ix. Travellers with mild symptoms are required to undergo a COVID-19, RTK Ag or RT-PCR infection screening test. Travellers are allowed to quarantine at home or own residence. Travellers are required to always wear a face mask. The COVID-19 test fee is borne by the traveller.
- x. Travellers with moderate / severe symptoms are referred to an Infectious Disease Physician. Further action is taken based on health assessments and expert’s decisions;
- xi. Citizen and non-citizen travellers who do not comply with these conditions must undergo compulsory quarantine at a quarantine station authorized by the government;
- xii. The mandatory quarantine period for travellers from all countries is 14 days. Nevertheless, this 14-day quarantine period will be extended for another 7 days (making the total quarantine of 21 days) if there is a need based on the results of the risk assessment of the traveller conducted on the 14th day. This additional quarantine will be carried out at the same



- residence, house or quarantine station;
- xiii. Travellers arriving from abroad and stopping (transit) at Kuala Lumpur International Airport (KLIA) are allowed to continue flights or travel to other states in Malaysia except for travellers who are symptomatic, tested positive for COVID-19 or close contact to positive cases;
- xiv. Travellers who arrive from abroad and stop (transit) at KLIA and do not have the required COVID-19 detection test results to continue their journey to other international destination countries, are NOT allowed to undergo the COVID-19 RT-PCR test at KLIA. This decision was made based on the current COVID-19 pandemic situation in the country and the capacity of the COVID-19 Low Risk Treatment Center (PKRC), government as well as private hospitals to treat COVID-19 cases is limited;
- xv. Travellers are given a Home Surveillance Order (HSO) digitally and fitted with a wristband or digital tracker device at PMA. The traveller will be named Person Under Surveillance (PUS);
- xvi. PUS is required to make a daily self-assessment through the Home Assessment Tool (HAT) in the MySejahtera application and this activity must continue for up to 14 days from the date of arrival;
- xvii. Health Officers at the PMA are required to send a copy of the HSO to the CPRC of the State Health Department and the relevant District Health Office;
- xviii. If PUS experiences symptoms during the quarantine period, PUS is required to come to a nearby health facility for assessment of health status as per existing guidelines (refer to Covid-19 Management Guidelines in Malaysia No. 5/2020 (updated on 05 August 2021). Fees COVID-19 detection test is borne by the PUS;
- xix. Repeat RT-PCR COVID-19 detection test, on day 10, or day 18 (for travellers who need to undergo quarantine for 21 days). If this result is negative, the release order (RO) will be displayed in the



MySejahtera application on the 14th day. If the PUS requires a hard copy of the RO, it can be applied from the nearest Health Office. Surveillance bracelets will be cut at the nearby Health Office.

Note: Refer to the Flow Chart in Appendices A and B.

Disease Control Division

11 August 2021



APPENDIX A

1. Fully Vaccinated Individuals for COVID-19

- 2 complete doses of vaccination i.e. more than 14 days after the date second dose
- Single dose of vaccine that is more than 28 days from the date of injection vaccine

2. Assessment on Suitability of Home or Residence for Quarantine

No.	Item	Please State the Number
1.	*People living in the house	
2.	Number of occupants over the age of 60 (elderly)	
3.	Number of occupants under the age of 12 (under age)	
4.	Number of occupants suffering from a comorbid condition or any illnesses	
5.	Number of pregnant mothers	
6.	Number of rooms in the house	
7.	Number of bathrooms/toilets	
8.	The number of rooms with attached bathroom	

* The total of all members of the house or residence that will be in the quarantine place

Best practices during quarantine at home or residence

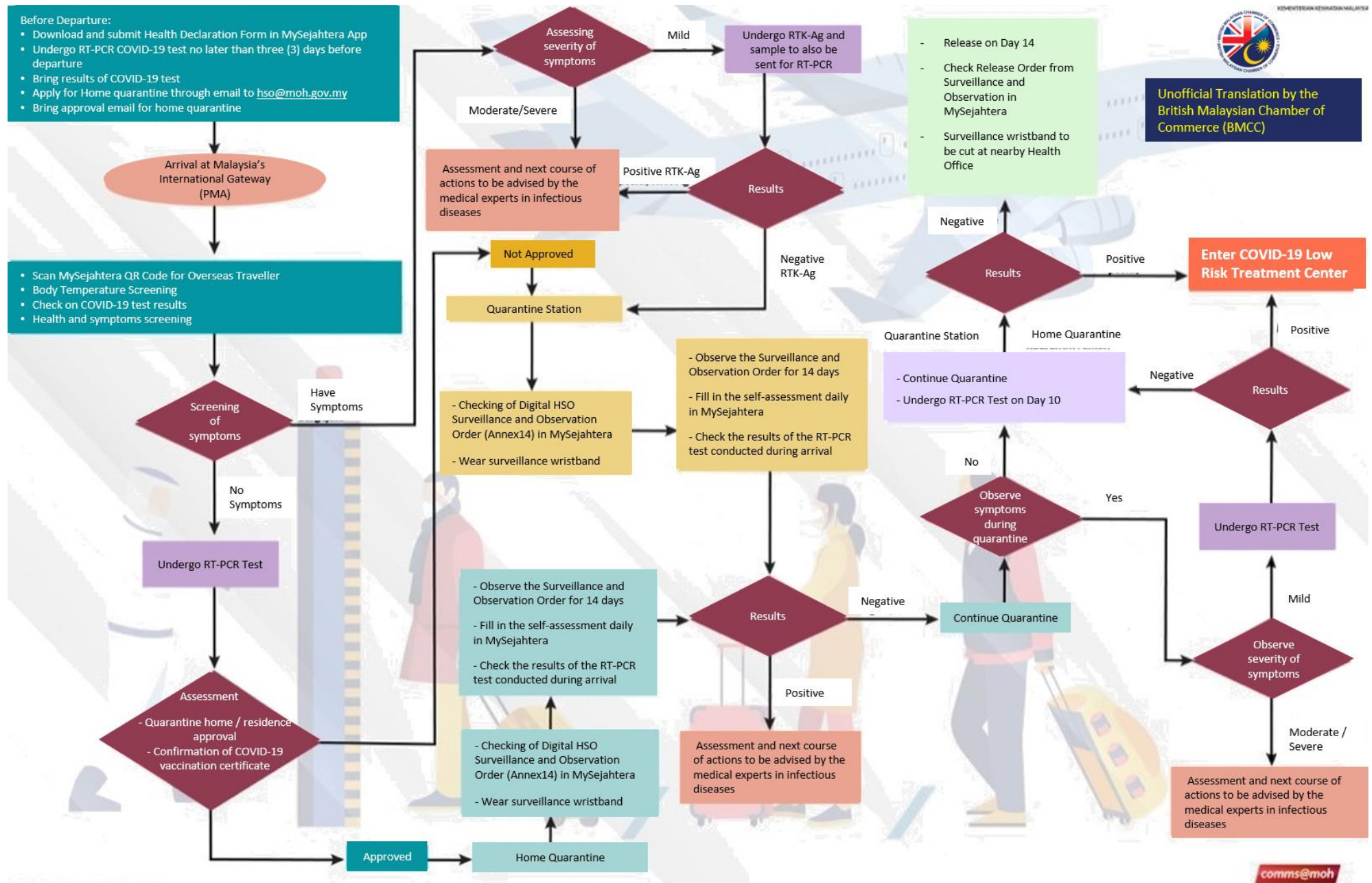
- i. Continuously wear a face mask all the way from the International Gateway to your home or residence.
- ii. Quarantine in a room separate from family members.



- iii. Room has an attached bathroom.
- iv. Wear a face mask if you need to leave a room in the house or residence and avoid close association with other people. Keep your distance with other people to at least two (2) meters.
- v. Ensure the condition of the house or residence is well ventilated such as opening of windows.
- vi. Food must be delivered to the room by family members (only placed outside of the room)
- vii. Surveillance bracelets shall be worn at all times throughout the surveillance and observation period.
- viii. Should always be contactable.
- ix. Must be at home or residence during this period of surveillance and observation.
- x. If you have symptoms, always wear a face mask. Cover your mouth and nose with a tissue when coughing and sneezing. Discard used tissues in the trash and WASH HANDS immediately with soap or hand sanitiser. Seek treatment at a nearby health facility for a health assessment.
- xi. Undergo a repeat RT-PCR COVID-19 test for infection detection of COVID-19, on day 10.
- xii. If the screening result of the RT-PCR COVID-19 infection detection test is negative, the release order for surveillance & observation (RO) will be displayed in the MySejahtera application on the 14th day. The PUS is required to the nearest Health Office for the cutting of the surveillance ring. If the PUS requires a hard copy of the RO, it can be applied from the relevant Health Office.



FLOWCHART FOR TRAVELLERS ENTERING INTO MALAYSIA



Unofficial Translation by the British Malaysian Chamber of Commerce (BMCC)